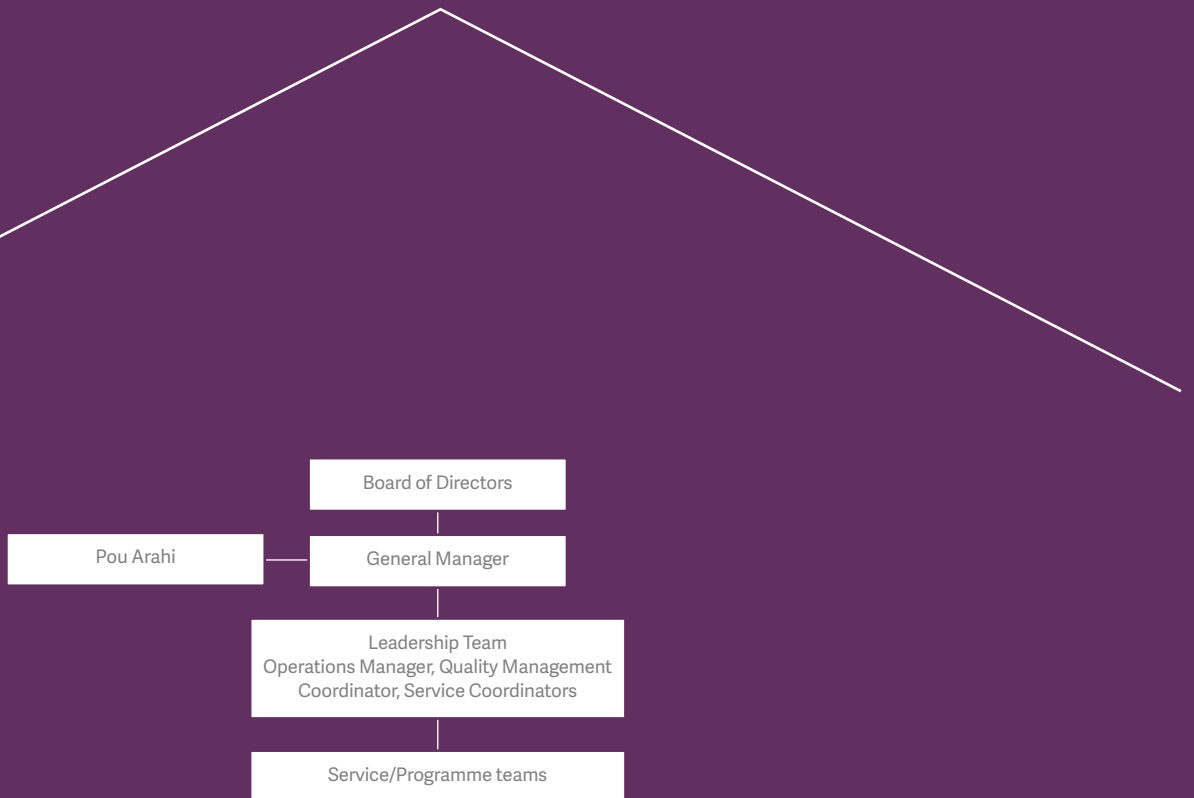




# CHAIR'S REPORT

*Tā te Heamana o Te Hau Ora O Ngāpuhi*



#### TE HAU ORA O NGĀPUHI LIMITED BOARD OF DIRECTORS

Hone Sadler	Chair
Te Rau Allen	Director
Myrtle Sanson	Director
Louis Gill	Director
Larry Alexander	Director
Ngawai Tuson	Director
Winnie Leach	Director



**Hone Sadler**  
Chair

## Tēnā

tātou katoa. I am pleased to present the first Board Chair Report for Te Hau Ora O Ngāpuhi. This is a significant milestone for Ngāpuhi as it has

been just over 12 months since we merged with Te Rūnanga-Ā-Iwi O Ngāpuhi.

### NEW BEGINNINGS

#### HE TIMATANGA HOU

Te Hau Ora O Ngāpuhi was established in 2015 as a subsidiary company of Te Rūnanga-Ā-Iwi O Ngāpuhi (Rūnanga) following the merger of Te Hau Ora O Kaikohe with the Rūnanga. Discussions of a possible merger had been in progress for several years. This became a realisation following the establishment of the Te Pu O Te Wheke Whānau Ora Collective and the strengthened relationships between member organisations. There was a natural synergy between Te Hau Ora O Kaikohe and the Rūnanga along with the willingness to work collaboratively based on the principles of Te Tiriti O Waitangi, to address the health inequities that exist for Ngāpuhi whānau.

### OUR ROLE AND RESPONSIBILITY

#### HE TŪRANGA, HE TAKOHANGA

Te Hau Ora O Ngāpuhi leads the health/hauora strategy for Ngāpuhi, serving whānau, hapū and hāpori living within Te Whare Tapu O Ngāpuhi, whether Māori or non Māori. Our strategic direction is aligned to the vision for the Rūnanga 'kia tū tika ai te whare tapu o Ngāpuhi', their mission statement and, Whānau Ora approach to work together to ensure our communities are safe and healthy.

### SAFE AND HEALTHY WHĀNAU

*"Where whānau are healthy spiritually, physically, mentally and environmentally; they are connected with each other, have strong support networks, and have the capacity to access the information they require. They work towards attaining rangatiratanga by becoming the leaders of their journey to wellbeing."*

Based in Kaikohe, Te Hau Ora O Ngāpuhi delivers services that contribute to achieving optimal outcomes for whānau.

We serve whānau within Te Whare Tapu o Ngāpuhi iwi boundaries, covering the middle Far North from South Hokianga through to Mangakāhia, across to the Bay Of Islands and down to the South-Western Whangarei district. Kaikohe is the town visited by whānau.

Our services are provided for all age groups ranging from pepi to kuia and kaumātua.



*Myrtle Sanson*

Director  
THOON



*Winnie Leach*

Director  
THOON



*Ngawai Tuson*

Director  
THOON





*Tai tamariki having fun, playing games*

## BOARD LEADERSHIP

### TE PŌARI MATUA

Over the past 12 months, the Board Directors have provided effective governance to the organisation's management team by providing strategic leadership and guidance to realise a vision where the sacred house of Ngāpuhi stands strong. The skill set amongst the Directors is broad and diverse including health, education, disability services, local knowledge, environment and law. I am fortunate to work with such knowledgeable and committed individuals, and I am thankful for their leadership and support.

## HIGHLIGHTS AND ACHIEVEMENTS

### NGĀ HUANGA O TE TAU

This year has been one of significant organisational growth and capability for Te Hau Ora O Ngāpuhi and provided opportunities to look at future proofing our whānau by asking this simple question: "What really matters to you and your whānau?"

Relationships with the Northland District Health Board were strengthened, evident through the delivery of hauora services such as the Sore Throat School Screening programme. Te Hau Ora O Ngāpuhi works with Public Health Nurses to help manage and reduce the threat and impacts of Rheumatic Fever.

During the review period, several significant milestones were achieved:

- Introduction of the Fizz Free policy for stall holders at this year's Ngāpuhi Festival. This kaupapa was supported by the Public Health Unit, Northland District Health Board
- Directors have completed the following Institute of Directors competency training:
  - Chairing the Board
  - Company Directors
  - Risk & Audit
  - Health & Safety
- Lead provider for the Kaiarahi, Whānau Ora initiative. Kaiarahi services were delivered in partnership with Te Rūnanga O Whaingaroa and Hauora Hokianga
- High level contribution to Social Housing crisis and the completion of over 40 comprehensive housing assessments and appropriate housing solutions to improve the living conditions of whānau
- Approximately 75% reduction in kaimahi sick leave due to the introduction of our organisation Wellness at Work Policy
- Increased organisational growth by at least 30%
- Savings of over \$50,000 in rate rebates for Kuia and Kaumātua, where Matua Fred Sadler advocated on their behalf to the Māori Land Court and Far North District Council
- Over 150 children participated in local Breakaway Holiday Programmes
- Kaiārahi services engaged with over 120 local whānau with high social and health needs
- The establishment of a Podiatry Clinic in partnership with Broadway Health Centre. 95% of the clients receiving treatment are Māori
- A new 'Stop Smoking' service
- Whānau are able to access mirimiri services from Kaitaia, Mangonui, Hokianga and Kaikohe. Over 850 client contacts made during this period
- 2569 swabs taken with 288 positive Strep A results recorded from the Sore Throat School Screening Service.

▼  
*Te Ropu Poa*  
General Manager  
THOON

▼  
*Loius Gill*  
Director  
THOON

▼  
*Te Rau Allen*  
Director  
THOON





One of the creative designs at Ngāpuhi Festival

---

*This year has been one of significant organisational growth and capability for Te Hau Ora O Ngāpuhi and provided opportunities to look at future proofing our whānau by asking this simple question: "What really matters to you and your whānau?"*

---

Our relationships and partnerships with local, regional and national groups and organisations are important to helping realise our vision and mission, and achieve optimal outcomes for whānau. I wish to acknowledge the following groups and organisations for their support:

- Te Pu O Te Wheke Whānau Ora Collective
- Pharmac
- Ministry of Health
- Ministry of Social Development
- Te Pou Matakana
- Ngāti Hine Health Trust
- Tai Tokerau Primary Health Organisation
- Northland District Health Board
- Great Potentials Foundation
- Far North REAP
- The Fono
- Far North Adult Literacy
- Te Rūnanga A Iwi O Whaingaroa
- Te Hiku O Te Ika Media
- Ngāti Kahu Social Services
- KODE (Kaikohe Opportunities, Dreams and Experiences)
- Kaikohe Rugby Club
- Hauora Hokianga.

In closing, I extend a warm thanks to our Directors, the General Manager and kaimahi for their hard work, continued efforts and commitment to our organisation, and Ngāpuhi.

**Hone Sadler**

*Chair – Board of Directors  
Te Hau Ora O Ngāpuhi*




---

**GLOSSARY OF TERMS:**

<b>Rūnanga</b>	Te Rūnanga-Ā-Iwi O Ngāpuhi
<b>THOOK</b>	Te Hauora o Kaikohe
<b>THOON</b>	Te Hau Ora O Ngāpuhi





## ACKNOWLEDGEMENT OF SERVICE

*Mihi ki ngā Kaimahi Whakarīrā*

It takes tremendous commitment and dedication to reach a milestone of 10 years service to Ngāpuhi and the Rūnanga.

And it is exactly the commitment and dedication of these special people that we wish to recognise and acknowledge, who have dedicated 10 or more years to supporting Ngāpuhi's development and wellbeing in various roles across the Rūnanga Group.

Emily Ashby

Ngaire Wycliffe

Midge Palmer

Alva Pomare

Shelley Naera-Tau

Medina Davis

Nancy Kelleher

*Thank you all for your support, service and dedication  
to the Rūnanga and Ngāpuhi.*

*E koutou mā, tēnā rawa atu koutou katoa*