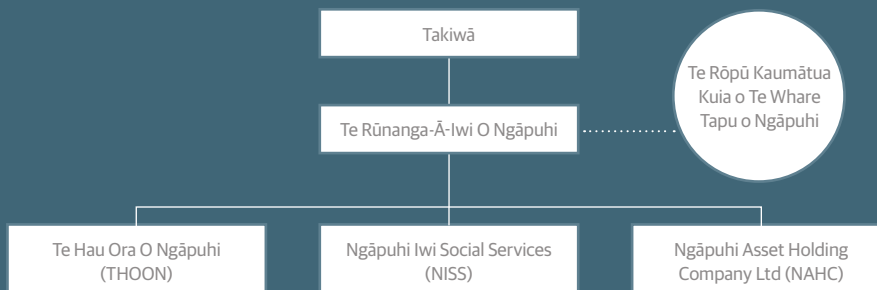




TĀ TE TUMUHERE O TE RŪNANGA-Ā-IWI O NGĀPUHI

CEO's Report



E te Iwi nui tonu o Ngāpuhi, tēnā koutou kātoa.

It is my pleasure to present this CEO report for the 12 month period 1 July 2017 to 30 June 2018.

Since taking on the role of CEO in April 2018, I have committed to making improvements and planning for the future to ensure we are fit for purpose to the organisation. I am excited by the opportunity to continue to fulfill our mission where the Rūnanga leads the spiritual, social, cultural, environmental and economic growth of Ngāpuhi, by ensuring the self-determination and on-going sustainability of our people.

As the only mandated entity to represent Ngāpuhi across all domains and the demands that come with this, it can at times appear daunting.

Since our inception in 1989 and over our 29-year history, we have prioritised the growth, development and wellbeing of Ngāpuhi, establishing and growing our asset base and ensuring that we are able to distribute benefits to Ngāpuhi members, whānau and communities.

The growth of our organisation over that time has been enormous. With three subsidiary entities, the structure of Te Rūnanga-A-Iwi O Ngāpuhi provides the appropriate backdrop to support the development and delivery of benefits and services to Ngāpuhi.

By providing social services and some housing contracts out of a very small building, we have now become the biggest Iwi social service provider in Aotearoa (Ngāpuhi Iwi Social Services). We have our own health provider service (Te Hau Ora O Ngāpuhi) and we have an asset holding company whose sole purpose is to grow and manage our assets and businesses (Ngāpuhi Asset Holding Company).

Lorraine Toki

Tumuhere – CEO



TE KŌKIRI ME TE AWEAWE

ADVOCACY AND INFLUENCE

The Rūnanga continues to play an important role speaking on behalf of Ngāpuhi. We place a high value on advocacy as shown in our submissions to the Mental Health Inquiry Panel, participating in the National Iwi Chairs Forum, supporting whānau and hapū with submissions on environmental issues. We have achieved excellent results. We also provided a substantial submission on how Ngāpuhi might settle grievances against the Crown for breaches of Te Tiriti o Waitangi. It would be fair to say that we relate to our place in history and are committed to representing Ngāpuhi politically - supporting the growth and wellbeing of our Ngāpuhi people and asset base.

TE TAU PAHURE AKE NEI

2018 AT A GLANCE

We have continued to play a significant role in facilitating discussions that have increased the confidence and integrity of the Rūnanga, particularly in the political, social and economic settings.

During the reporting year, the Rūnanga has delivered on a number of events and we have taken a lead role in spear-heading initiatives that support our whānau, hapū and marae. The benefits that these initiatives afford our Ngāpuhi whānau is our primary driver and the Rūnanga is proud to have delivered positively on behalf of Ngāpuhi:

- Positive Financial Performance
- 2018 Ngāpuhi Festival
- Submission to the Mental Health Inquiry
- Te Pū o Te Wheke/ Kaikohe Hub
- Ngāpuhi Hui-Ā-Iwi
- Mahi Kāinga – Housing
- Taiao – Environmental.

I would like to share some of these highlights and achievements with you.

MAHI PŪTEA

FINANCIAL PERFORMANCE

With major changes in key management personnel during 2018, the Rūnanga has focused on strengthening and consolidating our financial position.

We are pleased to report that the Ngāpuhi Rūnanga Group, inclusive of subsidiaries performed positively for the financial year ended 30 June 2018.

The Rūnanga Group surplus for the year was \$1.95m which contributed to an increase in the net assets to \$57.9m, compared to \$55.9m in 2017, an increase of 4.88% over the previous financial year.

TE HUI AHUREI Ō NGĀPUHI

2018 NGĀPUHI FESTIVAL

It was another wonderful celebration of Ngāpuhi whānaungatanga, aroha, waiata, taonga and arts and crafts at this year's Ngāpuhi Festival. 15,000 taitamariki, kaumātua, kuia, whānau and visitors attended Toll Stadium in Whangarei, to be a special part of Northland's largest FREE music, arts and cultural festival.

New Zealand's premier Iwi Art Exhibition, Toi Ngāpuhi was very successful, exhibiting more than 240 pieces of beautiful artworks from over 70 Ngāpuhi and Māori artists.

There were more than 70 food, information and craft stalls. The tamariki rides were all free including the larger than life 'Snowzilla' Waterslide.

Music and entertainment was a highlight with kapa haka, local entertainment and the very first Iwi Idol showcasing and supporting talented young singers and entertainers. Everyone enjoyed listening to Paua, Modern Māori Quartet, Pieter T, Majic Paora, Arthur Bristowe and Aaradhna.

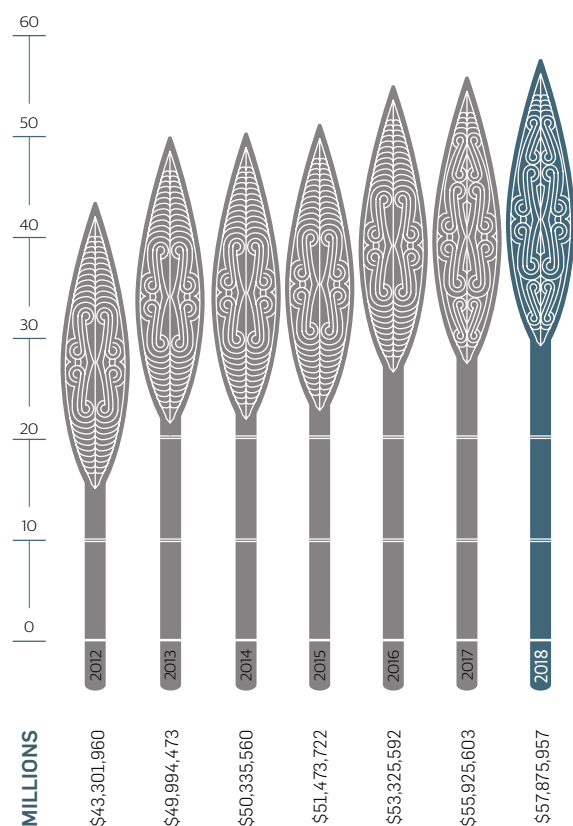
The relationship with our sponsors and partners is very important and highly valued. We extend our thanks to you all and look forward to working together to celebrate Ngāpuhi at future festivals.

FINANCIAL PERFORMANCE

TE RŪNANGA-Ā-IWI O NGĀPUHI

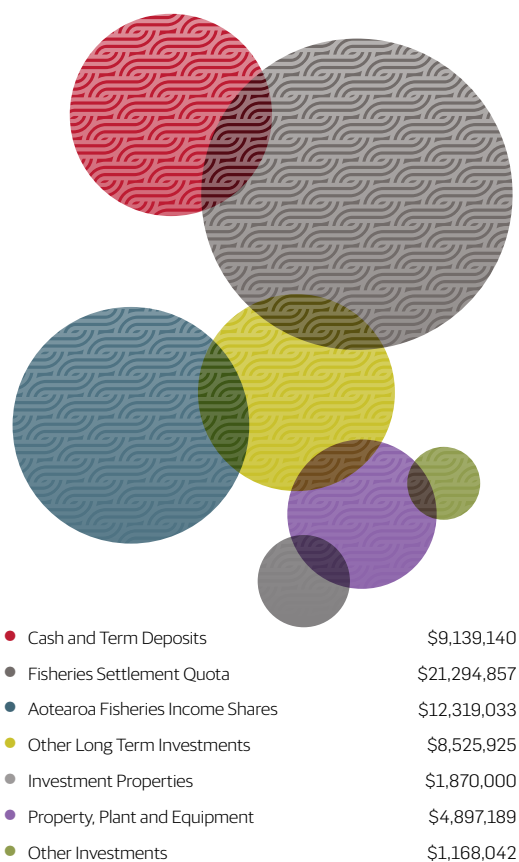
GROUP NET ASSETS

FIGURE 1



GROUP TOTAL ASSETS

FIGURE 2



SUMMARY OF GROUP NET ASSETS

GROUP RESULT (\$M)	2014	2015	2016	2017	2018
Gain (Loss) on Revaluation	(0.26)	(0.29)	(0.01)	0.37	0.25
Net Surplus	0.22	1.43	1.84	2.23	1.70
Tūhoronuku Contribution	0.29	-	-	-	-
Total Surplus for the Year	0.25	1.14	1.83	2.60	1.95
GROUP NET ASSETS (\$M)	2014	2015	2016	2017	2018
Assets & Liabilities	39.19	35.51	21.26	33.84	31.10
Fixed Assets, Managed Investments	11.15	15.96	32.06	22.09	26.78
Net Assets	50.34	51.47	53.32	55.93	57.88
Increase in Net Assets	0.35	1.13	1.85	2.61	1.95
Asset Growth	0.70%	2.26%	3.60%	4.88%	4.88%

HE TAPAETANGA

SUBMISSION TO THE MENTAL HEALTH

The wellbeing of our Ngāpuhi whānau is an absolute priority. Too often, barriers preventing us from taking responsibility for looking after our own is prevented by crown legislation and policy. In June the Rūnanga made a submission to the Mental Health Inquiry Panel. The key points we advocated for on behalf of Ngāpuhi were:

- **Early intervention services.** Our whānau have to be in the high percentage of needs before they can access services
- **Clinical services in our area** for children and adults are significantly stretched and needs to be increased
- **Access to paediatric clinical physiologists** is non-existent. This is raised at monthly Youth Offending Team meetings. The more rural the more the issue is compounded
- If there is a **change in legislation**, that wording be inserted that makes it a requirement that Ngāpuhi Iwi Social Services and Te Hau Ora Ō Ngāpuhi are involved at the outset in co-designing services, workforce development and programme delivery.

MAHI KĀINGA

HOUSING

Following on from last year, the Rūnanga, Te Puni Kōkiri and the Māori Housing Network invested in supporting a further 10 rural whānau to improve their housing situation.

The Maara Kai relationship enabled a further 30 whānau to plant fruit trees on their papakāinga blocks where house repairs were conducted. Whānau were most appreciative of the combined initiatives and the sustainable approach taken to rejuvenate whānau, community and activity on the whenua.

Papakāinga workshops were delivered in the latter part of 2017 which included Whaingaroa on the eastern coast. Workshops also targeted land trusts and Māori Housing providers wanting to build mixed tenure social housing in Kaitiāia while Whangārei and surrounding districts took advantage to do a variation of mixed housing builds.

TAIAO

ENVIRONMENTAL

It was a busy year with central government consultation on Kauri Dieback, Climate Change, the Conservation Act and reforms to the Resource Management Act 1991, which introduced national planning standards and te Mana Whakahono a Rohe.

Resource consent for water discharge and the taking of water from the horticulture and power generation sectors increased whānau and hapū participation in responding to the applications.

This sparked heightened awareness concerning Te Mana o Te Wai – the health of the waterways and a key interest on how and who actually controls water allocations.

Having access to clean drinking water remains a priority for many rural and marae communities, and securing freshwater for the needs of whānau and hapū continues to be a significant kaupapa for all Ngāpuhi.

HANGA RAUTAKI

STRATEGY DEVELOPMENT

Last year two important strategies were ratified:

- Te Reo O Ngāpuhi – Māori Language Strategy
- Piki-Tū-Rangitia – Ngāpuhi 25 Year Arts Strategy.

TE REO O NGĀPUHI

MĀORI LANGUAGE STRATEGY

The Te Reo O Ngāpuhi – Māori Language Strategy has been developed as a deliberate plan of action to strengthen, preserve and promote te reo o Ngāpuhi. The strategy and associated work plan was lead by Hōne Sadler, Raheera Shortland, Nau Epiha and Nora Rameka alongside Takiwā reo champions and advocates. Demonstrating their commitment to this kaupapa, our Rūnanga Board will conduct all Board business in Te Reo by 2021.

PIKI-TŪ-RANGITIA

NGĀPUHI 25 YEAR ARTS STRATEGY

Piki-Tū-Rangitia is a strategy to support Ngāpuhi arts and artists in all forms. The kaupapa behind Piki-Tū-Rangitia is that Ngāpuhi artists will drive this strategy for the wider benefit of Ngāpuhi, while the Rūnanga (along with others) will provide a supporting role to enable this to happen.

The Rūnanga engaged a project manager to prioritise and commence the associated work plan. Later in the 2017/18 year, we received funding from Foundation North to continue the engagement process with Ngāpuhi artists; and funding from Creative New Zealand will enable a wānanga series specifically for Ngāpuhi artists.

RAUTAKI MĀTAURANGA

EDUCATION STRATEGY

Connection, whakapapa, Ngāpuhi histories and stories, underpin the kaupapa of the draft Ngāpuhi Education Strategy. These themes have come through strongly from whānau who have talked with us about their aspirations for success, learning and excellence. The strategy is led by an advisory group of Ngāpuhi educationalists who work across the education sector. Whilst it is an education strategy, we are clear that learning occurs for whānau both in and out of the education system. One of the key objectives is to create and support a Ngāpuhi based mātauranga (curriculum) for our taitamariki.

HAKATUPU PŪTEA DEVELOPMENT FUNDING

Development funding continues to support cultural, social, environmental and economic development projects with sustainable outcomes and long-term benefits to Ngāpuhi hapū and marae communities.

The **Hapū Development fund** is utilised by marae and land trusts to support the development of plans to capture their goals, dreams and aspirations for the assets they are responsible for. Strengthening of governance structures and land utilisation planning has also been a priority.

There are five funding rounds per year and application forms are available from our Rūnanga office.

Email us at funding@ngapuhi.org or call us on 0800 Ngāpuhi to discuss your project, and how we maybe able to support you.

The **Major Marae Project Assistance fund** provides up to \$20,000 financial support to complete capital works projects on Ngāpuhi marae. This year, Omanaia Marae accessed the fund to complete the final stages of their whare tūpuna upgrade.

There are two funding rounds per year and application forms are available from our Rūnanga office.

Email us at funding@ngapuhi.org or call us on 0800 Ngāpuhi to discuss your project, and how we maybe able to support you.

\$40,000

DISTRIBUTED TO SUPPORT MARAЕ AND MĀORI TRUST DEVELOPMENT

2018 HAPŪ FUNDING DISTRIBUTION

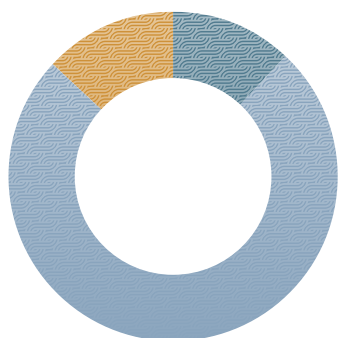


FIGURE 3 2018 HAPŪ FUNDING DISTRIBUTION BY TAKIWĀ

● Taiāmai ki te Marangai	\$5,000
● Ngā Ngaru o Hokianga	\$30,000
● Ngāpuhi ki Whangarei	\$5,000
TOTAL	\$40,000

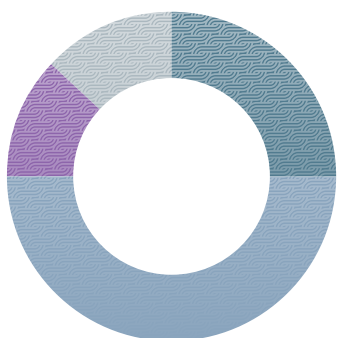


FIGURE 4 2018 HAPŪ FUNDING DISTRIBUTION BY CATEGORY

● Strategic Planning	\$10,000
● Marae Development	\$20,000
● Natural Resource Management	\$5,000
● Governance and Management	\$5,000
TOTAL	\$40,000

2018 NGĀPUHI EDUCATION SCHOLARSHIP FUNDING DISTRIBUTION

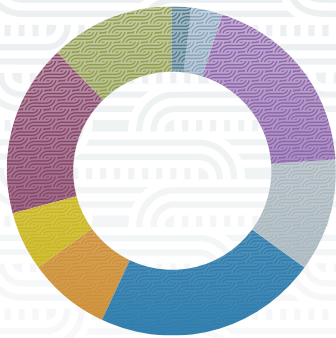


FIGURE 5 2018 EDUCATION SCHOLARSHIPS AWARDED BY TAKIWĀ

● Te Takiwā o Ngāpuhi ki Whangarei	\$2,500
● Te Roopu Takiwā o Mangakāhia	\$2,000
● Ngāpuhi ki te Hauāuru	\$16,000
● Ngāpuhi Hokianga ki te Raki	\$9,500
● Ngā Ngaru o Hokianga	\$19,000
● Taiāmai ki te Marangai	\$7,000
● Te Rūnanga o Taumārere ki Rākaumangamanga	\$5,500
● Ngāti Hine	\$14,500
● Other	\$10,500
TOTAL	\$86,000

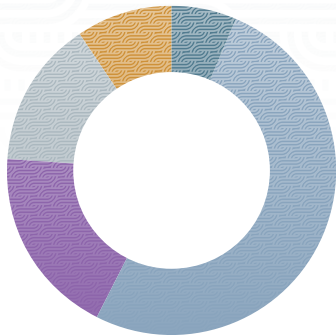


FIGURE 6 2018 EDUCATION SCHOLARSHIPS AWARDED BY STUDY TYPE

● Certificate	\$5,500
● Bachelor	\$44,000
● Master	\$16,000
● PG Dip in Māori Business	\$12,500
● PhD	\$8,000
TOTAL	\$86,000



FIGURE 7 2018 EDUCATION SCHOLARSHIPS AWARDED BY TAKIWĀ

● Te Takiwā o Ngāpuhi ki Whangarei	3
● Te Roopu Takiwā o Mangakāhia	2
● Ngāpuhi ki te Hauāuru	12
● Ngāpuhi Hokianga ki te Raki	6
● Ngā Ngaru o Hokianga	18
● Taiāmai ki te Marangai	7
● Te Rūnanga o Taumārere ki Rākaumangamanga	4
● Ngāti Hine	7
● Other	11
TOTAL	70

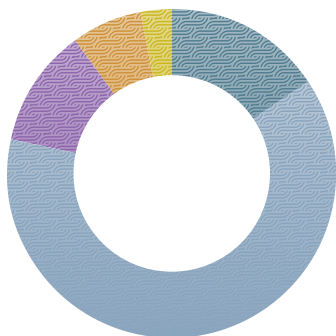


FIGURE 8 2018 EDUCATION SCHOLARSHIPS AWARDED BY STUDY TYPE

● Certificate	11
● Bachelor	44
● Master	8
● PG Dip in Māori Business	5
● PhD	2
TOTAL	70

2018 NGĀPUHI EDUCATION SCHOLARSHIP FUNDING DISTRIBUTION

\$86,000
IN **EDUCATION**
SCHOLARSHIPS
AWARDED

70
EDUCATION
SCHOLARSHIPS
AWARDED



44

SCHOLARSHIP RECIPIENTS
IN UNDERGRADUATE
BACHELOR-LEVEL
STUDY

8

SCHOLARSHIP
RECIPIENTS IN
MASTER-LEVEL
STUDY

2

SCHOLARSHIP
RECIPIENTS IN
DOCTORATE
PHD-LEVEL STUDY

MOST POPULAR

STUDY SUBJECTS

HEALTH | MEDICINE | LAW | MĀORI DEVELOPMENT

2018 NGĀPUHI EDUCATION SCHOLARSHIP FUNDING RECIPIENTS

RECIPIENT		QUALIFICATION
Lincoln	Baltus	Certificate Proficiency in Māori Language
Juran	Edmonds	Certificate in Carpentry
Elijah	Ewe-Presland	Certificate in Trade Skills Carpentry
Harmony	Heke	Certificate in Tourism
Reuben	Hurlstone	Certificate in Carpentry
Shelley Vanessa	Martin	Diploma in Counselling
Joseph	Moore	Diploma in Applied Addiction Counselling
Leah	Tua	Diploma International Logistics
Joseph	Waipouri	Electrical Engineering
David	Whittle	Te Pokaitahi Reo Te Kaupae 5 & 6
Dante	Wood	Certificate in Carpentry
Te Kooanga	Awatere-Reedy	Bachelor of Arts/Law
Naomi	Boylan-Caffery	Bachelor of Theology
Leo Peter Emery	Burnside	Bachelor of Medicine & Surgery
Emma Sapphira	Carter	Bachelor of Arts
Kelly	Cattell	Bachelor of Medical Imaging
Sarah Taylor	Davis	Bachelor of Arts/Science
Harrison William	Dowling	Bachelor of Law/Arts
Tayla	Dunn	Bachelor of Nursing
Amelia	Elphick-laveta	Bachelor of Medicine
Richard Thomas Bennett	Enright	Bachelor of Medicine & Surgery
Keani Pearl	Erstich-Coles	Bachelor of Communications
Rachel Sarah	Falwasser	Bachelor of Arts
Chloe Anne	Fergusson-Tibble	Bachelor of Medicine & Surgery
Rotoruanui-A-Kahu	Haimona	Bachelor of Laws & Arts
Eden Rose Courtney	Hall	Bachelor of Education
Jivarne	Joseph	Bachelor of Dental Surgery
Kiri	Kadarmia	Bachelor of Laws
Erin Aroha	Kennedy	Bachelor of Commerce
Tahlia	Kerridge	Bachelor of Medicine & Surgery
John Hori Tirua	Kingi	Bachelor of Arts/Law
Jessica	Leaming	Bachelor of Social Work
Rebecca Louise	Lindsay	Bachelor of Engineering
Eden	McCarthy	Bachelor of Health Sciences/Law
Jane Marama	McGregor	Bachelor of Social Work

2018 NGĀPUHI EDUCATION SCHOLARSHIP FUNDING RECIPIENTS

RECIPIENT		QUALIFICATION
Jack William	Michl	Bachelor of Commerce
Daniel	Montgomery	Bachelor of Forestry Science
Isaac	Morunga	Bachelor of Arts
Lisa	Nathan	Bachelor in Health Science
Maraea	Parangi	Bachelor of Occupational Therapy
Deina Antoinette	Payne	Bachelor of Health Science
Rachel Elizabeth	Peehikuru	Bachelor of Nursing
Rueben James	Rameka	Bachelor of Music
Danae Huia	Rangihika	Bachelor of Arts
Te Ao Marama ki Te Rangi	Rewiri-Wharerau	Bachelor in Health Science
Mikayla Beverley	Riddall	Bachelor of Commerce
Ethan Dean Matiu	Seddon-Cope	Bachelor of Creative Media
Jordan Michael	Te Whaiti-Smith	Bachelor of Medicine & Surgery
Simone Hingano	Tongatule	Bachelor of Arts/Law
Finn	Trimble	Bachelor of Int.Business & Mgmt
Kamalani Merekura	Tukariri	Bachelor of Science
Danica	Turner	Bachelor of Nursing
Hana Marie Cooksley	Tuwhare	Bachelor of Speech Language Therapy
Tali Jorja	Wilson-Munday	Bachelor in Health Science
Josi	Witehira	Bachelor of Arts/Law
Tahuu	Cooper	Masters of Indigenous Studies
Te Reo O Te Omeka	Hau	Master in Business Studies
Kelly Moanna	Klink	Master of Arts
Theresa Marie	Roigard	Master of Business Administration
Jordine	Romana	Master of Health Psychology
Tui Charlotte	Smith	Master of Applied Social Work
Ngairo	Tahere	Master of Indigenous Studies
Korey Mikaera	Te Hira	Master in Public Policy
Julian Kama Adrian	Reweti	PG Dip Business in Māori Development
Anne Lynnette	Tau	PG Dip Business in Māori Development
Sydney	Tau	PG Dip Business in Māori Development
Ronald Keith Gee	Wihongi	PG Dip Business in Māori Development
Petra	Witana	PG Dip Business in Māori Development
Riripeti Patricia	Haretuku	PhD in Education
Erena	Wikaire	PhD in Philosophy

2018 NGĀPUHI SPONSORSHIP FUNDING DISTRIBUTION

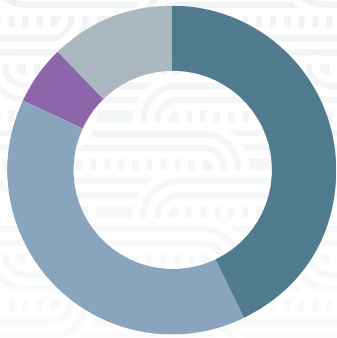


FIGURE 9 2018 SPONSORSHIP FUNDING DISTRIBUTION BY CATEGORY

• Sport Events	\$11,186
• Cultural Events	\$9,824
• Community Events	\$1,550
• Education Events	\$2,750
TOTAL	\$25,310

11

**CULTURAL
SPONSORSHIPS
AWARDED**

19

**SPORTING
SPONSORSHIPS
AWARDED**



2

**COMMUNITY
SPONSORSHIPS
AWARDED**

5

**EDUCATIONAL
SPONSORSHIPS
AWARDED**

2018 NGĀPUHI SPONSORSHIP FUNDING RECIPIENTS

RECIPIENT	ACTIVITY / EVENT	CATEGORY
Horeke Hunting Club	Horeke Hunting Competition	Community
Tukau Community	Menstrual Cup Kaupapa	Community
Kaingahoa Marae	He Wharangī Whaka Kaupapa	Cultural
One11 Navigators	WIPCE Conference	Cultural
Ngā Kahanga Uku	International Indigenous Arts	Cultural
Te Rangī Aniwaniwa	Hawaiki Rising Waka Voyage	Cultural
Ngā Uri a Gale raua Ngakuru	Dedication of buildings	Cultural
Okaihau College Kapa Haka	Te Tai Tokerau Festival	Cultural
Takou Marae Fundraiser	Māori Kai Festival	Cultural
Opononi Area School	TTT Ngāti Manu Kōrero	Cultural
He Puna Marama Trust	National Secondary Schools Kapa Haka	Cultural
Waiora to Wellington	Kia Mau Festival	Cultural
Te Kotuku Kapa Haka	National Secondary Schools Kapa Haka	Cultural
Te Kura o Horeke	Haerenga ki Rotorua	Education
Northland College	Leadership Wānanga	Education
Te Kura o Omanaia	Air NZ Airports for Schools	Education
TKKMO Taumārere	Quiz Nite for Kura	Education
Team Moana Year 5 & 6	National Park Trip - Ohaewai Primary	Education
Opononi Area School	NZ Area School Sport Tournament	Sport
NZ Tag20 U14 Boys	Tag20 Oceania Cup	Sport
Massey High 5th Grade Rugby	U15s National Tournament	Sport
Whirinaki Te Hiku	Kurangaituku Netball Tournament	Sport
U13 Northland Dev. Hockey Team	McGrath Hockey Tournament	Sport
Ngā Tama Toa League	NZ Māori Teina Tournament	Sport
U14 Mixed Touch	Northern IPS Series	Sport
Ngāpuhi ki Rarotonga	Netball in Paradise	Sport
TTT U16 Boys	Northern IPS Series	Sport
TTT U16 Boys Mixed	Northern IPS Series	Sport
Patu Tai Tokerau	PA Ball	Sport
Maurioho Whānau Trust	Ngāti Porou Pa Wars	Sport
Youth Tournament Bowls	Youth Bowls	Sport
U15 Boys Basketball	2018 National Māori Basketball	Sport
7th Annual Māori Battalion Memorial	Bowls Tournament	Sport
Ngāpuhi Toa U17'S Rugby League	National Māori Rugby League	Sport
Datz Us Netball	85th Kurangaituku Netball	Sport
Team Paddle Fly	IVF Va a World Sprints	Sport
TKK Māori o Kaikohe	Te Rima Multisport	Sport

2018 NGĀPUHI DISCRETIONARY FUNDING DISTRIBUTION



FIGURE 10 2018 DISCRETIONARY FUNDING DISTRIBUTION BY TAKIWĀ

● Ngāpuhi ki te Hauāuru	\$1,861
● Ngā Ngaru O Hokianga	\$3,567
● Ngāti Hine	\$1,600
● Ngāpuhi ki Whangārei	\$800
● Te Rūnanga o Taumārere ki Rākaumangamanga	\$2,200
● Taiāmai ki te Marangai	\$3,680
● Ngāpuhi Hokianga ki te Raki	\$3,350
● Te Roopu Takiwā o Mangakāhia	\$1,800
● Other	\$1,000
TOTAL	\$19,858

4

**CULTURAL
DISCRETIONARY FUNDING
AWARDED**

87

**SPORTING
DISCRETIONARY FUNDING
AWARDED**



1

**COMMUNITY
DISCRETIONARY FUND
AWARDED**

11

**EDUCATIONAL
DISCRETIONARY FUNDING
AWARDED**

2018 NGĀPUHI DISCRETIONARY FUNDING RECIPIENTS

RECIPIENT	ACTIVITY / EVENT	CATEGORY
Serenity Nielsen	NZ Country Music Ent. Of the Year	Community
Kristina Te Whata	Hawaiki Rising	Cultural
Hinemoata Reremoana	Hawaiki Rising	Cultural
Chastity Samoa	Youth Dance Festival	Cultural
Rawhiti Erstich Coles	Leaders Dev. Trip to Italy	Cultural
Ocean Kohere	TWKOM Cultural Exchange	Education
Misstee Walker-Collins	Year 6 EOY Ruapehu	Education
Terri Wlaker-Masters	OPC Trip	Education
Paninga Tupou	Youth Leadership /Cultural Exchange	Education
Niovara Elliot	Youth Leadership /Cultural Exchange	Education
Mahonri Owen	Conference of Robotics	Education
Lizzie Strickett	PRIDOC	Education
Jacqueline Paul	Aspiring Leaders Forum	Education
Kahupora Mason	RJ Tucker Thompson	Education
Ivan Erstich Coles	Hillary Outdoor Leadership	Education
Inverness Cowles	Europe Trip	Education
Mihaka Lemon	International Deaf Rugby Tour	Sport
Reef Bainbridge	Northland FC Development	Sport
Noelani Roberts	National Aotearoa Māori Netball	Sport
Niki Lawrence	Aotearoa Māori Netball	Sport
Johnson Mendoza	Big Foot Hoops Tournament	Sport
Justin Roberts	IVF Waka Ama Worlds	Sport
Rita Hokianga	NZ White Sox Softball Tour of Japan	Sport
Toby Witehira	U15 Boys National Tournament	Sport
Lybarti Henare	Tag 20 Rugby Oceania	Sport
Lavinia Abraham	Outdoor Pursuits	Sport
Grace McCarthySinclair	Aust.High School Nationals	Sport
Marley Murphy	Māori National Basketball	Sport
Orewa Murphy	Māori National Basketball	Sport
Aaron Murphy	Māori National Basketball	Sport
Kairangi Koni	Trans Tasman Golf Trophy	Sport
Anahera Koni	Trans Tasman Golf Trophy	Sport
Hayley Lee	Open Trans Tasman Campaign	Sport
Usher Robson	U14 National Talent Programme	Sport
Charm Atkins Haddon	NS ISA Dev. Softball	Sport
Rory Rudolph	Las Vegas Classic Basketball	Sport

2018 NGĀPUHI DISCRETIONARY FUNDING RECIPIENTS

RECIPIENT	ACTIVITY / EVENT	CATEGORY
Shaylah Harris	HHI Dance Nationals	Sport
Rita Hokianga	WBSC Softball Champs	Sport
Nathaniel Cashell	IVF Waka Ama Worlds	Sport
Zion O Leary	NZ Secondary Clay Target Shoot	Sport
Johnny Thompson	Northern IPS	Sport
Jackson Thompson	Northern IPS	Sport
Callum Olsen	NZU18 Hockey Development Camp	Sport
Te Arawa Tumai	IVF World Sprint Waka Ama	Sport
Destiny Kohere	Vaka Eiva	Sport
Jaden Marsh	International Indigenous Netball	Sport
Ponoha Maihi	International Indigenous Netball	Sport
Dena Maree Hemara	2018 Great Wall China Marathon	Sport
Dallas Harema	NZ Mens National Basketball	Sport
Joseph Barlow	Roller Mills Rugby	Sport
Te Ruki Pierce Dunn	United Nations Conference	Sport
Rawinia Wikaira	IPS Touch	Sport
Wiremu Wikaira	IPS Touch	Sport
Tayla-Surf Hauraki-Hudson	Junior Touch Nationals	Sport
Dayna McNally	IPS Touch	Sport
Jessica Hona	2017 Youth Football Dev Tournament	Sport
Tupuria King	World Waka Ama Sprint	Sport
Rewi Vaa	U14 Dev Tour	Sport
Darrio Penetito-Hemara	2018 TransTasman Test Series	Sport
Terrell Peita	Rarotonga Rugby Tour	Sport
Aaliyah Konui	2018 Youth Football Tournament	Sport
Janita Tatana	IWF World Masters weightlifting	Sport
Anthony Solomon	State Rugby League Champs	Sport
Te Tai Rawhiti	Roller Mills Rugby	Sport
Addilcent Croft	Junior Inter Prov Touch	Sport
Rangimaria Waiatarere	TTT U16 Girls - IPS	Sport
Makanihi Tohu-Smith	31st AMNOHL Netball	Sport
Te Aho Paenga	Tahiti World Waka Ama	Sport
Cayliss Shepherd	Junior Inter Prov Touch	Sport
Amarnee Shepherd	Junior Inter Prov Touch	Sport

2018 NGĀPUHI DISCRETIONARY FUNDING RECIPIENTS

RECIPIENT	ACTIVITY / EVENT	CATEGORY
Carl Shepherd	National Touch Tournament	Sport
Hunter Southey	Ripken World Baseball	Sport
Kaylah Waihi	Aims Games	Sport
Azra Waihi	Aims Games	Sport
Danielle Paenga	International 7's Tournament	Sport
Jayzelee Waihi	NZ Secondary National Basketball	Sport
Tahlia Rose Parangi	Touch Nationals 2018	Sport
Jordan Lee Parangi	IPS Touch Nationals	Sport
Henare Parangi	IPS Touch Nationals	Sport
Bailey Paenga	IPS Touch	Sport
Jayde Paenga	Touch Nationals	Sport
Natasha Bowyer	Breca Sprint Event	Sport
Willow Rawiri	NZ Youth Ambassadors in Italy	Sport
Tara Rawiri	NZ Youth Ambassadors in Italy	Sport
Sonya King	Gobi Desert Cup Race	Sport
Taryn Rihari	HHI Dance Nationals	Sport
Alannah Curtis	HHI Dance Nationals	Sport
Krysta Hoani	Chiba WBSC Womens	Sport
Arorangi Tauranga	Worlds Sanix Rugby World Title	Sport
Vicki Ah Chee	NZ Indoor Netball Nationals	Sport
Nathan Ah Chee	NZ Indoor Netball Nationals	Sport
Dani Ah Chee	NZ Indoor Netball Nationals	Sport
Alexandria Wilson	NZ Junior Indoor Netball	Sport
Madeleine Kawana	4 Day Cruise Study	Sport
Tukotahi Mareikura-Edmonds	World Hip Hop	Sport
Hailey Mareikura-Edmonds	World Hip Hop	Sport
Taumanu Walker	Gold Coast Rugby Carmival	Sport
Te Whareumu Harahap	U12 Australian Basketball	Sport
Malachi Dunn	Basketball Pacific Aust. U12	Sport
Terynne Mills Barber	Basketball Pacific Aust. U12	Sport
Cautney Kemp	National Kabbadi	Sport
Zane Heta	World Sprint Waka	Sport
Mana Williams-Eade	Cycling to raise funds Vulnerable Children	Sport



**HE MAARA KAI,
HE WHENUA,
HE ORANGA**



WITH THE SUPPORT OF
TE PUNI KŌKIRI,
**THE MAARA KAI
RELATIONSHIP ENABLED**

30
WHĀNAU

TO PLANT FRUIT TREES
ON THEIR PAKĀINGA BLOCKS
WHERE HOUSE REPAIRS
WERE CONDUCTED.



TE PŪ O TE WHEKE KAIKOHE COMMUNITY HUB

Our partnership and collaboration with Ngāpuhi Asset Holding Company and the Far North District Council progressed well around a new community facility for Kaikohe. We look forward to sharing more updates and news over the coming year.

NGĀPUHI HUI-Ā-IWI

These Hui-Ā-Iwi provide an opportunity for our Board Chair, CEO and Senior Leaders from Ngāpuhi Iwi Social Services, Te Hau Ora O Ngāpuhi and Ngāpuhi Asset Holding Company to present, engage and receive feedback from our people.

This year we hosted hui in Kaikohe, Whangārei and Auckland and enjoyed meeting new whānau and hearing their insightful ideas and questions. The feedback from these hui have informed our priorities and direction ahead as we help to ensure the sacred house of Ngāpuhi stands strong. We look forward to sharing more positive kōrero with you at next years' hui.

PŌTITANGA-Ā-TAKIWĀ TAKIWĀ ELECTIONS

The three-yearly rotation of takiwā elections provides opportunities for registered Ngāpuhi and takiwā members to nominate and vote for their respective takiwā representatives.

At our AGM, the successful candidates for Taiāmai ki te Marangai, Te Takiwā o Ngāpuhi ki te Tonga o Tāmaki Makaurau and Ngāpuhi ki Waitematā will be officially ratified. It is from this date that they will officially take office.

Congratulations and best wishes is extended to all three Takiwā executive committees and trustees.



This year we hosted hui in Kaikohe, Whangārei and Auckland and enjoyed meeting new whānau and hearing their insightful ideas and questions.



MANAAKI TANGATA SERVICE HE MANAAKI KI NGĀ TAITAMARIKI

Manaaki Tangata is part of the wider Ministry of Social Development programme, Tai Tamariki 500. We maintained this service delivery in Kaikohe, providing pastoral support to 18-24 year olds through their employment and training pathways. Manaaki Tangata is delivered by two kaimahi who worked with more than 90 taitamariki over the past 12 months.

RARAUNGA-Ā-IWI NGĀPUHI TRIBAL MEMBERSHIP

Our registration of members continues to increase. Over the year, and particularly during this year's Takiwā elections, we received a significant number of new tribal registrations.

As a registered member:

- You are identified as a member of Ngāpuhi Iwi
- You can vote on tribal matters
- You can apply for education scholarships and other grants
- You are eligible for member-only benefits
- We can keep you up-to-date and informed about tribal matters.

For more information, contact our tribal registrar on 0800 NGAPUHI or registrations@ngapuhi.org.



I am buoyed with confidence of the important responsibility we are entrusted with on behalf of Ngāpuhi and what has been achieved and progressed for our people.



HE TŪHONO KŌRERO

COMMUNICATIONS

It is time to update and refresh our communications platforms. To help inform this, we published an online survey about our website and received an outstanding response. The feedback and ideas have informed the refresh and upgrade of our current website. We look forward to sharing this with everyone very soon.

While our current platforms are being refreshed, we continue to inform Ngāpuhi through E Mara E Pānui, ngapuhi.iwi.nz and Pukamata/Facebook.

E MARA E-PĀNUI

E Mara E Pānui is our e-newsletter that we have been publishing every week since 2012. With more than 7000 subscribers, it continues to be a reliable and consistent way for Ngāpuhi to stay informed about the work and partnerships we are involved with, other news, current affairs and events of interest to Ngāpuhi.

NGĀPUHI.IWI.NZ

Our website (ngapuhi.iwi.nz) is a great source of information and news. There are links and information advising how to register as a tribal member, information about education scholarships and other funding support, copies of our annual reports and information about Ngāpuhi marae, hapū and takiwā.

FACEBOOK

We are live and active on Facebook ([facebook.com/ngapuhirunanga](https://www.facebook.com/ngapuhirunanga)). With more than 3,400 people following our page, we strive to share positive kōrero of relevance and interest to Ngāpuhi. We also appreciate interacting with our people, hearing all of your wonderful ideas and celebrating being Ngāpuhi!

The Ngāpuhi Festival facebook page is where you can view all the photos and videos from this year's (and past) festivals. You might see yourself, or one of the whānau.



Click.



Like.



Share.



HE MIHI

THANKS AND ACKNOWLEDGEMENTS

This year completes the fourth year of our five-year strategy and our successes and highlights represent the support and effort of many people.

I wish to acknowledge the leadership and support of Te Rōpū Kaumātua Kuia, our Chair, Deputy Chair and Board of Trustees for your leadership and support.

I also extend my condolences on the passing of the previous CEO Tony Dowling and best wishes to his wife Linda and children.

To Erena Kara, who as Acting CEO maintained stability and confidence across the Ngāpuhi Rūnanga Group over the past year and to our kaimahi at the Rūnanga and across the Ngāpuhi Rūnanga Group, thank you for your valued contribution to this year's achievements.

E ANGA HAKAMUA

LOOKING FORWARD

As I reflect on the performance of the Rūnanga over the past 12 months, and my active role as CEO since April, I am buoyed with confidence of the important responsibility we are entrusted with on behalf of Ngāpuhi and what has been achieved and progressed for our people.

With the change in government comes opportunities for new conversations, programmes, initiatives and explore new partnerships, particularly as we transition from a pre-settlement to post-settlement environment.

In preparation for this, we are developing a Post Settlement Governance Entity (PSGE) option that delivers on the collective aspirations and dreams of Ngāpuhi. Importantly though, it is Ngāpuhi who will ratify the Deed of Settlement and the PSGE.

To ensure our proposed PSGE model is relevant and reflective of what Ngāpuhi wants, we will be reaching out to you for your comments, ideas and criticism. Why? Because our future is your future, our commitment is to Ngāpuhi everywhere, today and tomorrow.

E te Iwi nui tonu o Ngāpuhi - on behalf of my team, I extend our thanks to Ngāpuhi nui tonu for your ongoing support.

Toro mai tō ringa, kia harirūtia – let us continue to grow together and move forward with strength and confidence.

No reira, e ngā mana, e ngā reo, e ngā huihuinga tāngata o Ngāpuhi-nui-tonu, ma lo Te Matua koutou, arā, tātou kātoa e tiaki, e manaaki e atawhai i te Āo, i te Pō, i ngā wā kātoa.

Nāku iti nei

Lorraine Toki

Tumuhere – CEO
Te Rūnanga-Ā-Iwi O Ngāpuhi



**Auē, auē te aroha
Ki a rātou mā**

Oh, the love and compassion
for those who have passed on